

# MALLORCA GOLD

REAL ESTATE *by* DANIEL WASCHKE



Ref. 40358

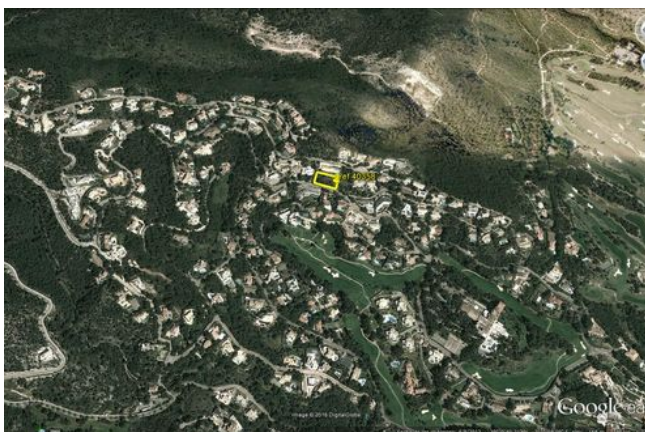
**Plot in the established part of Son Vida with sea views**

**Son Vida, Palma**

**Price: Price on Request**

Living area: 0m<sup>2</sup>  
Plot: 2.448m<sup>2</sup>  
Bedrooms: 1  
Bathrooms: 1

Energy Certificate: In Progress



## Ref. 40358

South / southwest facing.

Good building plot with a surface of 2,450 m2 with sea views close to the golf courses of Son Vida.

Son Vida is one of the most exclusive residential areas of Mallorca and offers 3 golf courses and two 5 star hotels.

Very good connections to the city center of Palma and the southwest of the island.

### Features

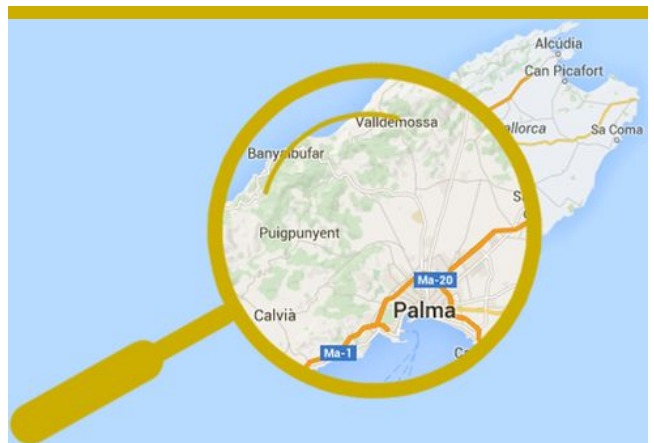
Sea View

### Distances

10 - 20 minutes drive to airport, 10 - 20 minutes drive to Palma

### Disclaimer

All information provided here is deemed reliable but is not guaranteed and should be independently verified. No warranties or representations are made of any kind.



Ref. 40358

