



Ref. 93148

**Modern apartment with views to Bellver castle**

**Bonanova - Son Armadams, Palma**

**Price: € 900.000**

Living area: 130m<sup>2</sup>  
Plot: 0m<sup>2</sup>  
Bedrooms: 2  
Bathrooms: 2

Energy Certificate: In Progress



## Ref. 93148

Large reception room leading to covered terrace. Modern kitchen with Siemens appliances. Laundry area. Large study area / bedroom. Master bedroom suite with bathroom and dressing room. Second bedroom with en suite bathroom and dressing room.

Presented in immaculate condition, under floor heating, reverse air conditioning, Philip Stark bathroom appliances, excellent lighting system.

Lovely views from the terrace towards Bellver Castle, Palma and the Cathedral. Communal Mediterranean gardens, swimming pool, 24 hr security.

1 parking place, 1 storage room.

## Features

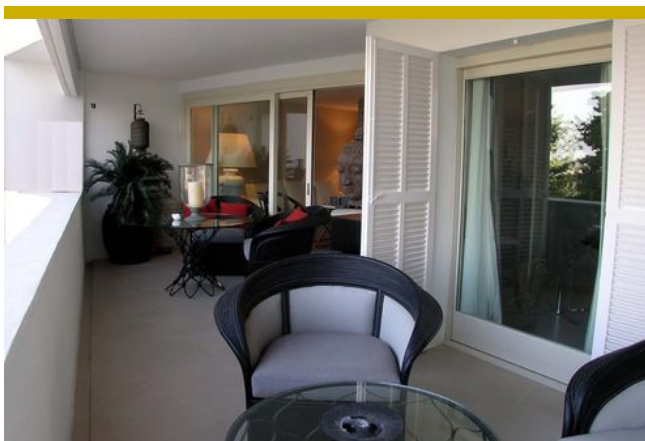
Mountain view, Sea View, Community pool, Community garden, TV room, Privacy, Close to schools, Child friendly, Good road access, Various terraces, Lift, Tiled floors, Covered terraces, Open terraces, Underfloor heating, AC hot/cold, Modern style

## Distances

20 - 30 minutes drive to airport

## Disclaimer

All information provided here is deemed reliable but is not guaranteed and should be independently verified. No warranties or representations are made of any kind.



# MALLORCA GOLD

REAL ESTATE *by* DANIEL WASCHKE

Ref. 93148

