



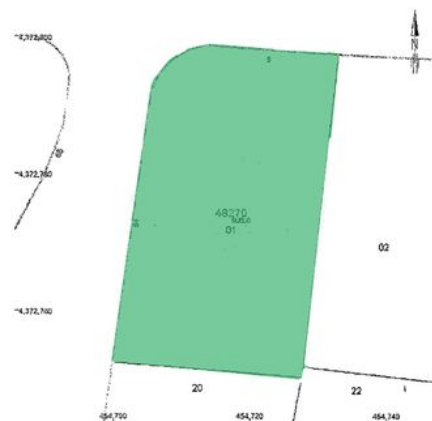
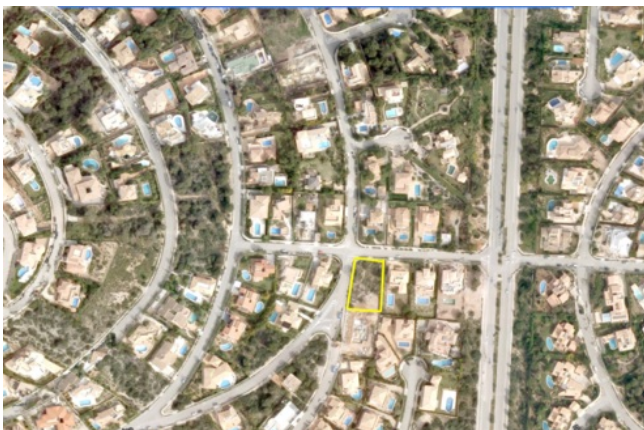
Ref. 40294

Flat plot with a south facing orientation in exclusive area
Santa Ponsa - Port Adriano, Calvia - Southwest

Price: € 595.000

Living area: 0m²
Plot: 1.300m²
Bedrooms: 1
Bathrooms: 1

Energy Certificate: In Progress



Ref. 40294

This corner plot of 1,300 m² is located in Santa Ponsa, very close to the sea.

All surrounding properties are already built.

Maximum build ability with a single family villa of 455 m².

All connections such as water, sewerage and electricity are available.

An already given but expired building permission for a villa of 378 m² is available and could possibly be re-activated.

Construction requirements of the municipality of Calvià:

Zone RU-3, max. total size of construction allowed 30%, max. Floor area 35%, max. 2 floors + basement, max. storey height 6.5 m, max. Building height of 8m, boundary-line min. 3m.

Features

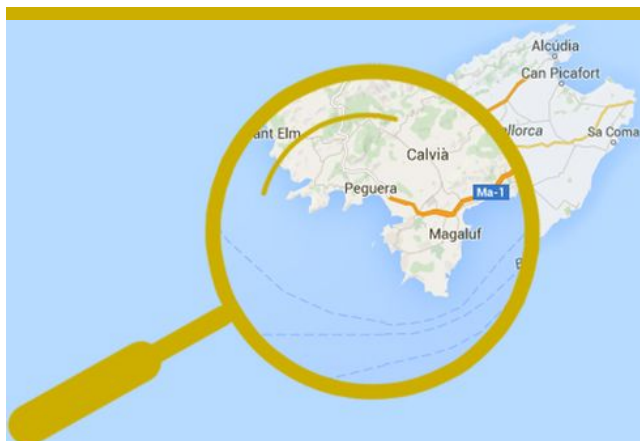
Close to schools, Good road access, Investment property

Distances

More than 30 minutes drive to airport, 20 - 30 minutes drive to Palma

Disclaimer

All information provided here is deemed reliable but is not guaranteed and should be independently verified. No warranties or representations are made of any kind.



Ref. 40294