



Ref. 90357

Family home close to Palma in Son Veri Nou Son Veri, Lluçmajor - Southeast

Price: € 990.000

Living area: 500m²

Plot: 620m²

Bedrooms: 5

Bathrooms: 5

Energy Certificate: In Progress



Ref. 90357

Southwest facing. The living area of 570 m2 is distributed over two floors.

Ground floor: entrance area, living room with fireplace, dining room, kitchen with utility room, 1 bedroom with bathroom en suite.

First floor: master bedroom with bathroom en suite, 1 further bedroom with bathroom en suite, 2 further bedrooms sharing a bathroom.

The property offers good quality and equipment, marble floors, wooden floors in the bedrooms, reversible air-conditioning (hot / cold), own well. Furnished.

Flat garden with swimming pool, inviting open and covered terraces. Garage for 2 cars.

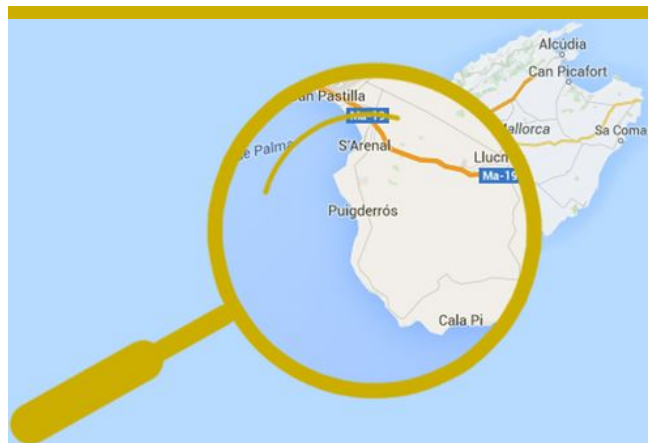
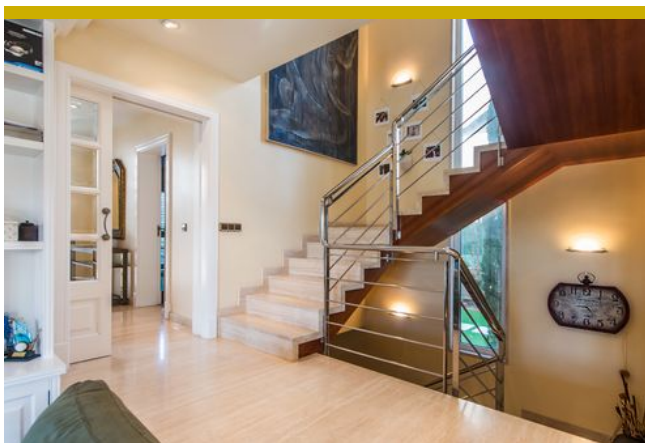
Features

Distances

Can walk to beach, Can walk to restaurants, Can walk to shops, 10 - 20 minutes drive to airport, 10 - 20 minutes drive to Palma

Disclaimer

All information provided here is deemed reliable but is not guaranteed and should be independently verified. No warranties or representations are made of any kind.



MALLORCA GOLD

REAL ESTATE *by* DANIEL WASCHKE

Ref. 90357

